



Facade Scheme: Coastal White | Artist Impression

Blueys

 2
  1
  2
  1

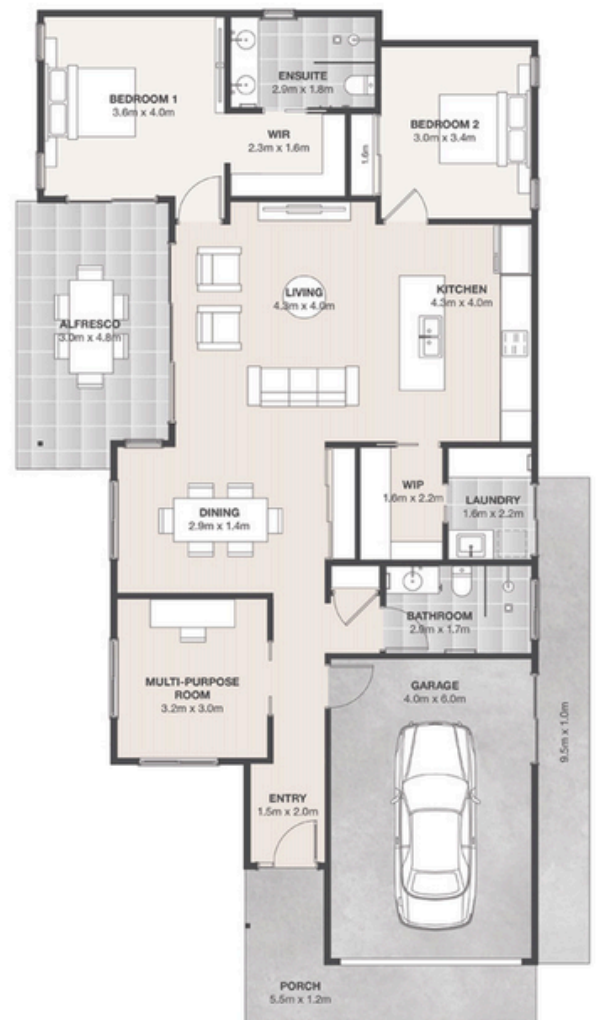
FLOORSPACE

Area based on external wall footprint

Living Area	118.77m ²
Alfresco + Porch	14.23m ²
Garage	25.45m ²
Total	158.45m²

Blueys sits apart from the standard home offering. As a bespoke design, it was made especially for its unique block. From the moment you arrive, a sense of scale defines this home as something different. An oversized garage immediately signals the generosity of space; a theme that continues throughout the home.

The backyard is equally expansive, being larger than typical homesites at Thyme Forster. With the north facing alfresco, it floods the home with natural light throughout the day. Inside, a spacious walk-in pantry, separate living and dining areas and a dedicated multipurpose room create a layout designed for flexibility and ease. Positioned in close proximity to the Clubhouse, Blueys is a home that will be sought after for both its space and its setting.



Artist impression. Not to scale and subject to change and approvals

Thyme Lifestyle Resort Forster
 240 The Southern Parkway
 Forster, NSW 2428

Sue Price
 Sales Consultant
 0428 699 340

THYME
 LIFESTYLE RESORT

1300 028 557 | forster@thyme.com.au
 forster.thyme.com.au

FORSTER