



Facade Scheme: Coastal White | Artist Impression

Diamond

3 2 2

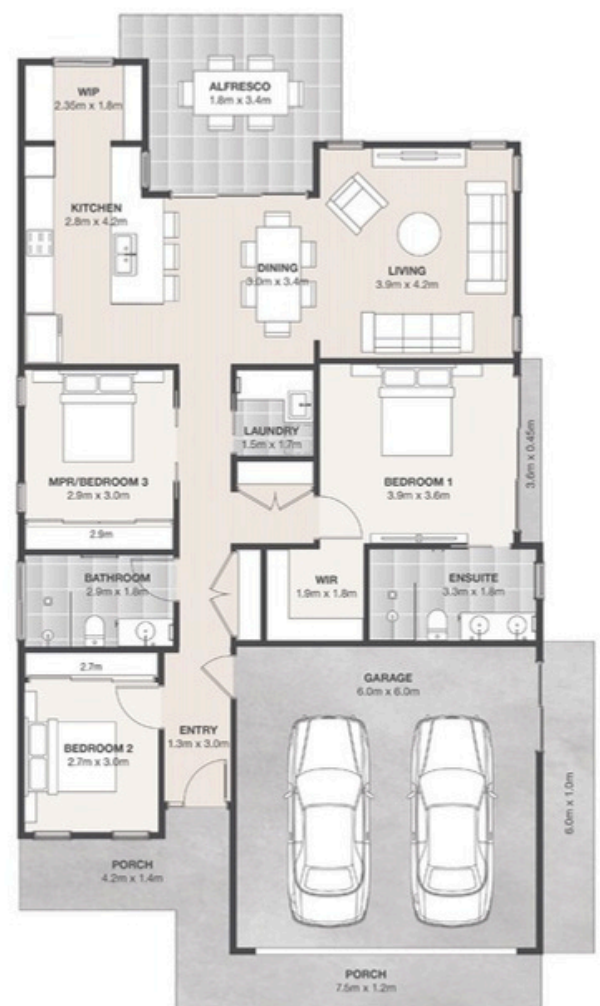
FLOORSPACE

Area based on external wall footprint

Living Area	116.57m ²
Alfresco + Porch	15.76m ²
Garage	7.89m ² 1
Total	70.22m²

True to its name, Diamond shines in both style and functionality. A welcoming entry hallway creates an immediate sense of arrival, with the bedrooms thoughtfully positioned for privacy and comfort. The flexible third bedroom can easily become a home cinema, hobby room or study, while the private main bedroom features its own ensuite and walk-in robe.

At the heart of the home, a light-filled open-plan kitchen, living and dining area connects seamlessly to the covered alfresco for easy indoor-outdoor living. Complete with a generous island bench, large walk-in pantry and convenient servery window, the kitchen is perfectly designed for relaxed entertaining and resort-style living.



Artist impression. Not to scale and subject to change and approvals

Thyme Lifestyle Resort Forster
240 The Southern Parkway
Forster, NSW 2428

Sue Price
Sales Consultant
0428 699 340

THYME
LIFESTYLE RESORT

1300 028 557 | forster@thyme.com.au
forster.thyme.com.au

FORSTER