



Facade Scheme: Grey Mist | Artist Impression

# Bonny

 2
  1
  2
  1

## FLOORSPACE

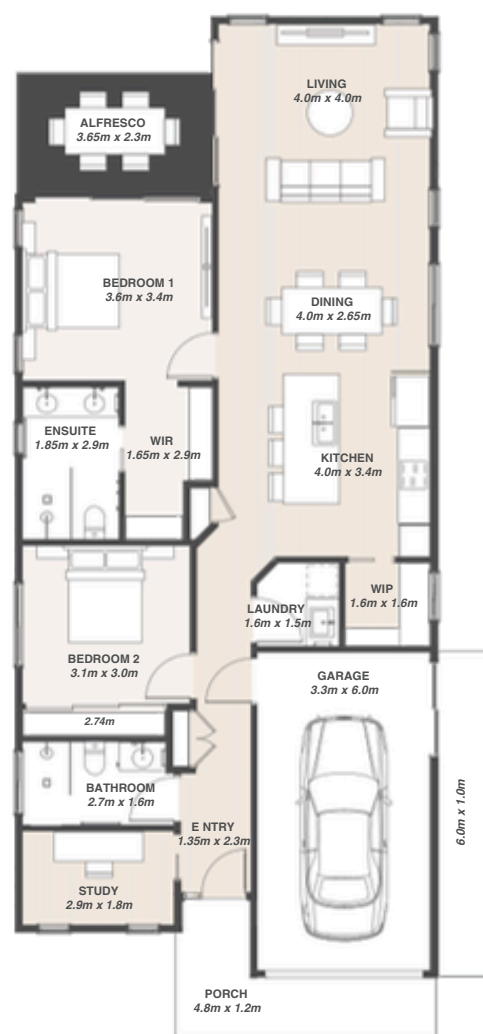
Area based on external wall footprint

Living Area	104.34m <sup>2</sup>
Alfresco + Porch	10.66m <sup>2</sup>
Garage	21.21m <sup>2</sup>
<b>Total</b>	<b>136.22m<sup>2</sup></b>

Bonny is a thoughtfully composed home, where considered zoning creates a clear separation between rest and living. Two bedrooms mean there's room for guests, while the master suite is complete with a walk-in robe and ensuite.

Beyond, the open-plan kitchen, living and dining area is anchored by a generous island bench, forming a natural gathering point for everyday life.

The living and dining spaces transition to the alfresco, with direct access also provided from the master suite, strengthening the home's connection to outdoor living.



Artist impression. Not to scale and subject to change and approvals

**Thyme Lifestyle Resort Forster**  
 240 The Southern Parkway  
 Forster, NSW 2428

**Sue Price**  
 Sales Consultant  
 0428 699 340

**THYME**  
 LIFESTYLE RESORT

1300 028 557 | forster@thyme.com.au  
 forster.thyme.com.au

FORSTER